



**RIO RANCHO PUBLIC SCHOOLS
PROCUREMENT DEPARTMENT**

February 15, 2018

ADDENDA #4

RFP No. 2018-010-IT

Project: Purchase Category 2 E-Rate

RFP Submittal Deadline: March 02, 2018 @ 2:00 p.m. local time
Rio Rancho Public Schools
Purchasing Department
Attn: Michael Madrid, CPPB – Purchasing Agent
500 Laser Road NE
Rio Rancho, NM 87124

DOCUMENTATION:

A copy of RRPS Portable Classroom Special System Cabling Specifications is provided at the end of this addenda.

NOTE:

Because of logistics, RRPS is planning this project for the summer break of 2019. This project will take connectivity and special systems down to the portables during this project, so RRPS needs the project completed before school starts again in the fall of 2019. Please specify if you are able to meet this schedule.

Questions 1 & 2:

Good morning and thank you for your time yesterday during the walk-through. I know we were all on the same page yesterday on the questions but wanted to send these questions over to be included in the addendum.

Question #	Reference Page/Paragraph/Sec	Question
1	Proposal Item #4- Pg 26 General Question	Can the warranty status of the roof at Puesta Del Sol ES please be provided with the name of the roofing contractor?
2	Proposal Item #4- Pg 26 General Question	Can the updated specifications for the Portables be distributed electronically to include the site maps with items discussed during the walk-through?

Response to Questions 1 & 2:

- **Response #1** - RRPS will contract and pay the roofing company directly to seal and warranty the roof. The timing and schedule will be coordinated with the winning vendor at the time of installation.
- **Response #2** – The response to this question is included in the specifications as referenced at the bottom of this addenda.

Thank you for your interest in Rio Rancho Public Schools.

ACKNOWLEDGE ADDENDUM WITH RFP:

COMPANY/FIRM NAME

SIGNATURE

DATE

RRPS Portable Classroom Special Systems Cabling Specifications

Sites: PDES, MCES, ESES, RRES

ERMS - NA to these specs. (see drawing)

A) From MDF (Room #) to IDF (Portables Distribution Rack- see RRPS Specs)

1. Data- 12 or 24 Strand, dependent on how many Portables are installed, 50 micron Fiber, all strands to be terminated in a patch panel in MDF & IDF (OSP underground rated)
2. Telephone/Intercom/Security- 100 pair CAT 3 Cable to be terminated on surge protected punch down blocks in MDF & IDF (OSP underground rated)
3. CATV- Series 6 or 11, dependent on distance from MDF, Coax Cable with compression connectors to be terminated on a distribution splitter in the IDF (OSP underground rated)
4. Intercom- See A2
5. Fire Alarm- SLC Loop Wire (connects to addressable initiating devices) to be terminated on a terminal block in IDF- 16 AWG, twisted, shielded pair, 40 ohms maximum per length of Style 6 and 7 loops. ACS/TERM Wire (connects to annunciating devices) to be terminated on a terminal block in IDF- 18 AWG, twisted, shielded pair, 120 ohms impedance (OSP underground rated)
6. Security- See A2

* *Note- When using existing 2" UG Conduits that supply Distribution Rack, Innerduct not required if there are 3 separate runs supplying the Distribution Rack. If using an UG Pull Box in between MDF and IDF than see note below regarding UG Pull Box requirements.*

***Note- When using existing 3" UG Conduits that supply an UG Pull Box, install Style: 4G-3" 3 Cell Detectable MaxCell Fabric INNERDUCT.*

****Note- When using an existing UG Pull Box that will supply the Distribution Rack: Box size shall be 3' x 4', Conduits shall be at least 12" below bottom of lid, No splices allowed in this box, and a French Drain will be installed.*

B) From IDF (Portables Distribution Rack) to Portables (Data/Telecom Enclosure in each Portable- see RRPS Specs)

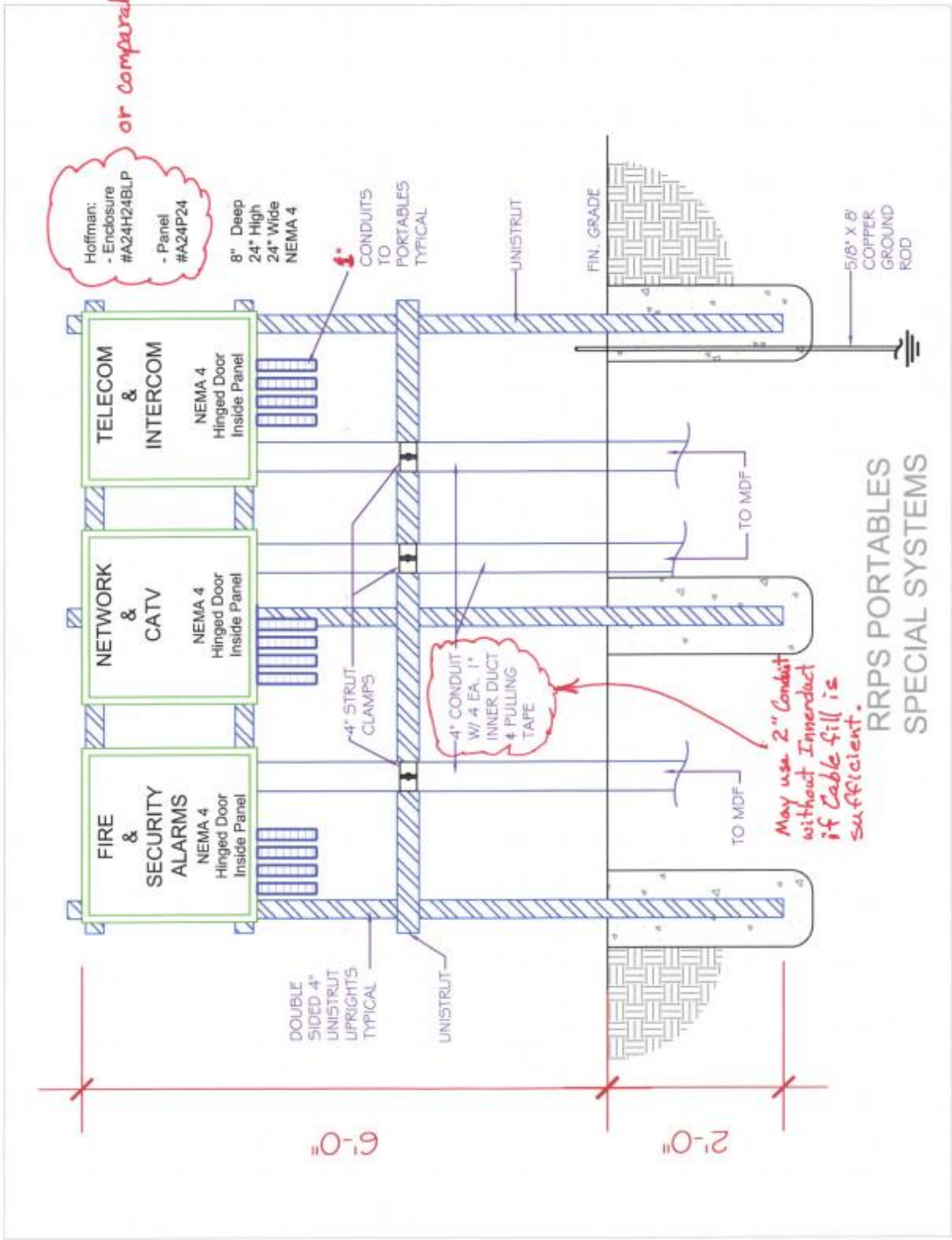
1. Data- 4 Strand 50 micron Fiber, all strands to be terminated at both ends with a Media Converter in the Portable Data Enclosure (OSP underground rated)
2. Telephone- 2 each 4 pair Cable, CAT 3 or better rated; terminated on a surge protected block (OSP underground rated)
3. CATV- Series 6 Coax Cable with compression connectors terminated into a 2-way splitter (OSP underground rated)
4. Intercom- 2 each 4 pair Cable, CAT 3 or better rated; terminated on a surge protected block (OSP underground rated)
5. Fire Alarm- Same as #5A above, but needs to be terminated at the Pull Stations & Horn/Strobes in each Portable (OSP underground rated)
6. Security- Not Specified at this time. (OSP underground rated)

* *Note- All Special Systems Cabling Infrastructure needs to be re-terminated.*

C) From Portable (Data/Telecom Enclosure in each Portable) to Classroom/Office (Wall Devices/ 3 Com NJ-100's or NJ-1000's)

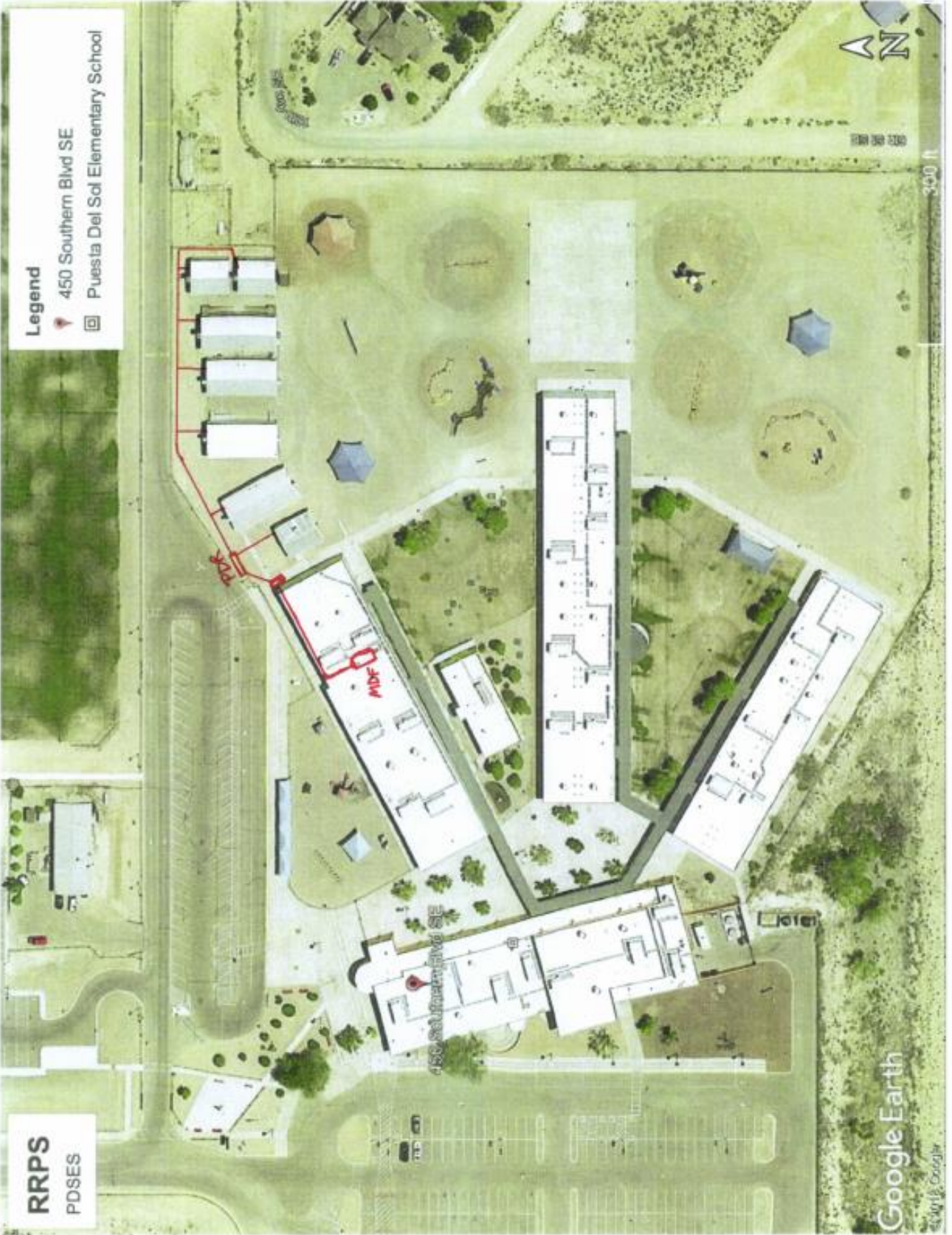
* **Not Applicable to this Scope of Work**

All Fiber & Cables need to be Tested & Certified per EIA/TIA specifications with documented results to be handed over to RRPS for approval of occupancy. **All old Cabling Infrastructure not in use to be removed by Vendor.**



RRPS PORTABLES
SPECIAL SYSTEMS

or comparable



RRPS
PDSES

Legend
📍 450 Southern Blvd SE
🏠 Puesta Del Sol Elementary School



0 100 200

340 ft

450 Southern Blvd SE

Hotel

Google Earth

©2011 Google

RRPS
ESES

Legend

- 3100 Stapleton Ave NE
- Ernest Stapleton Elementary School

*Redirect 3000 2" U.S.
Conduit to Portable (New)
Distribution
Rack*

PDR

Sub

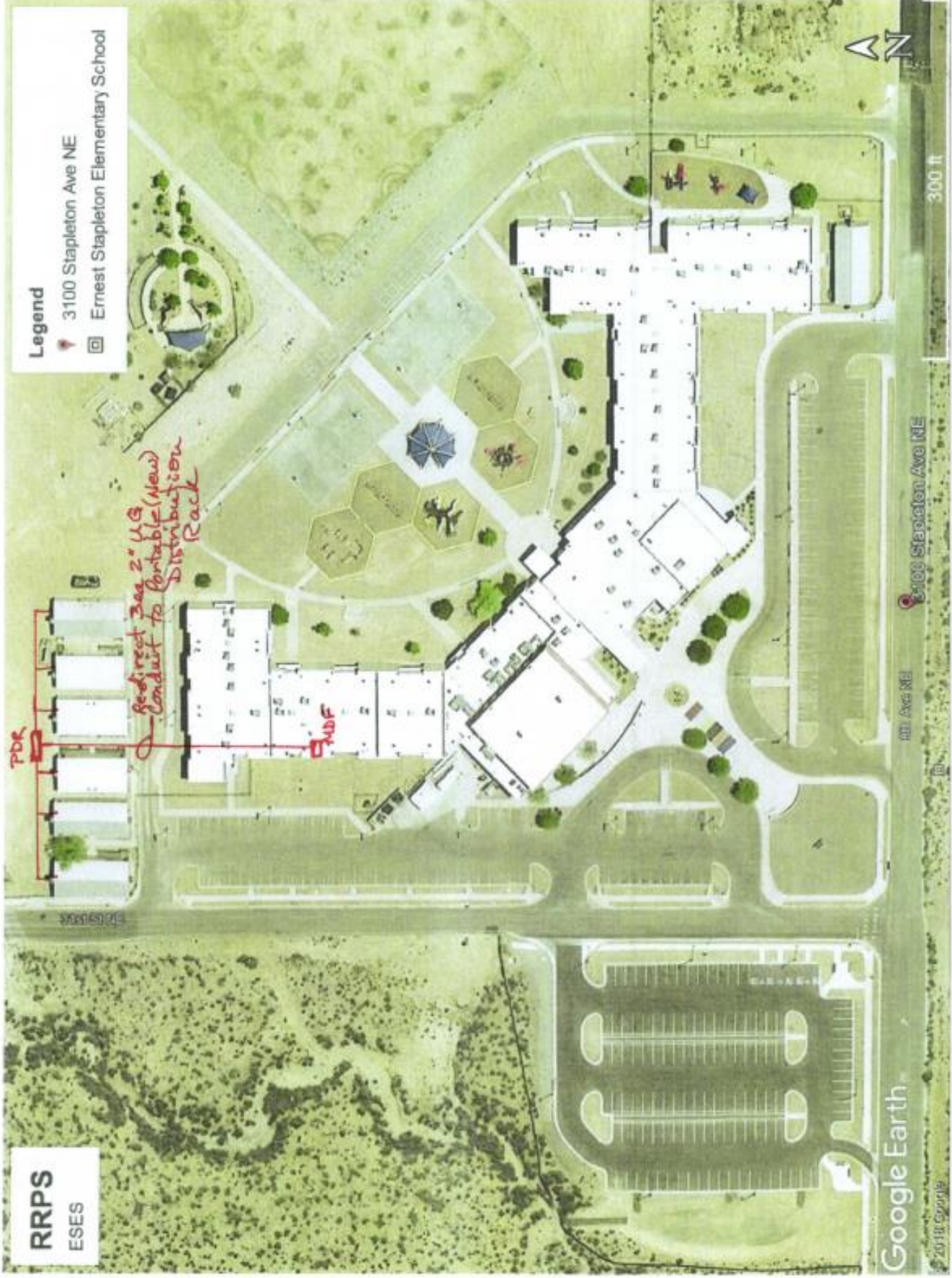


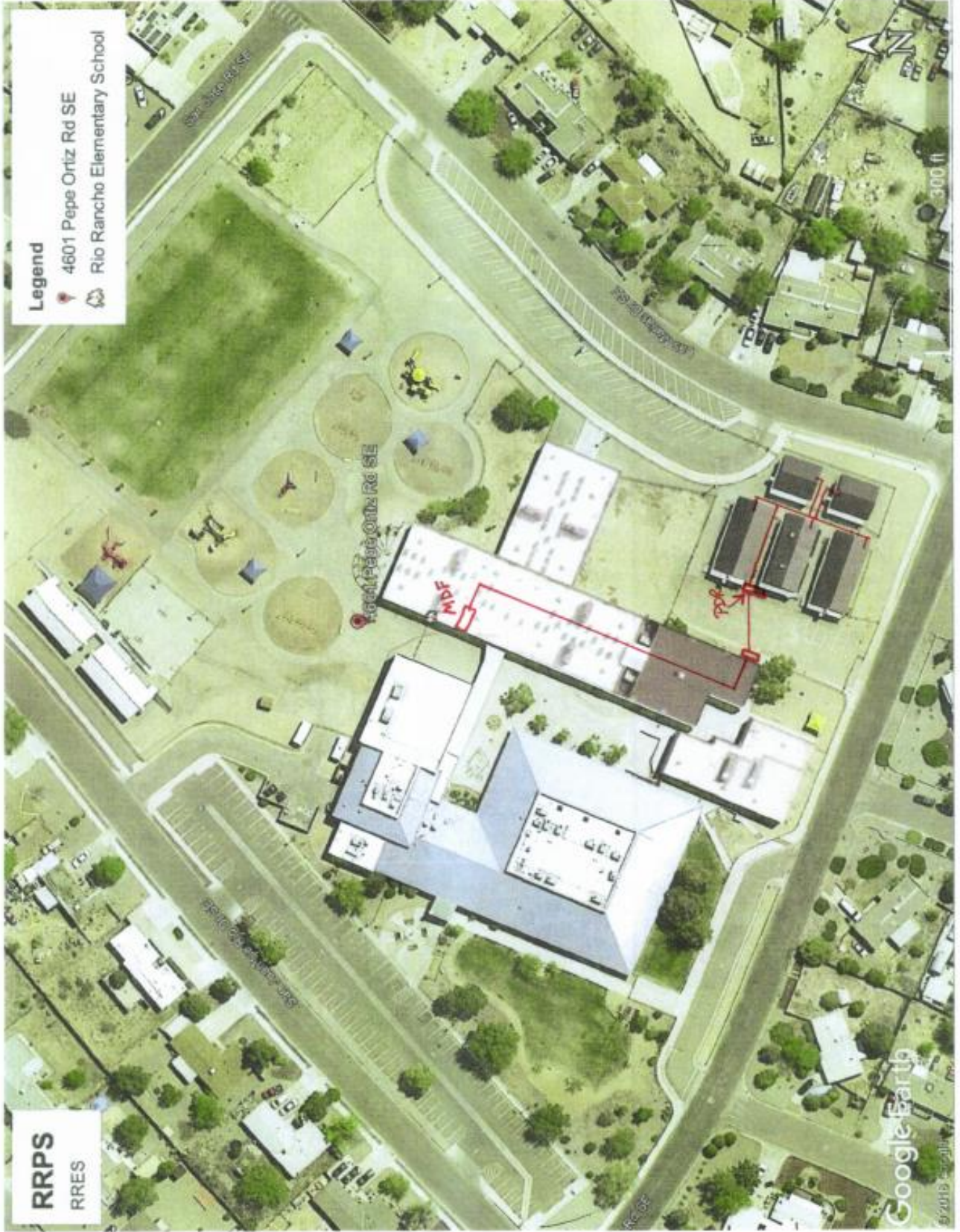
Google Earth

© 2014 Google

3100 Stapleton Ave NE

300 ft





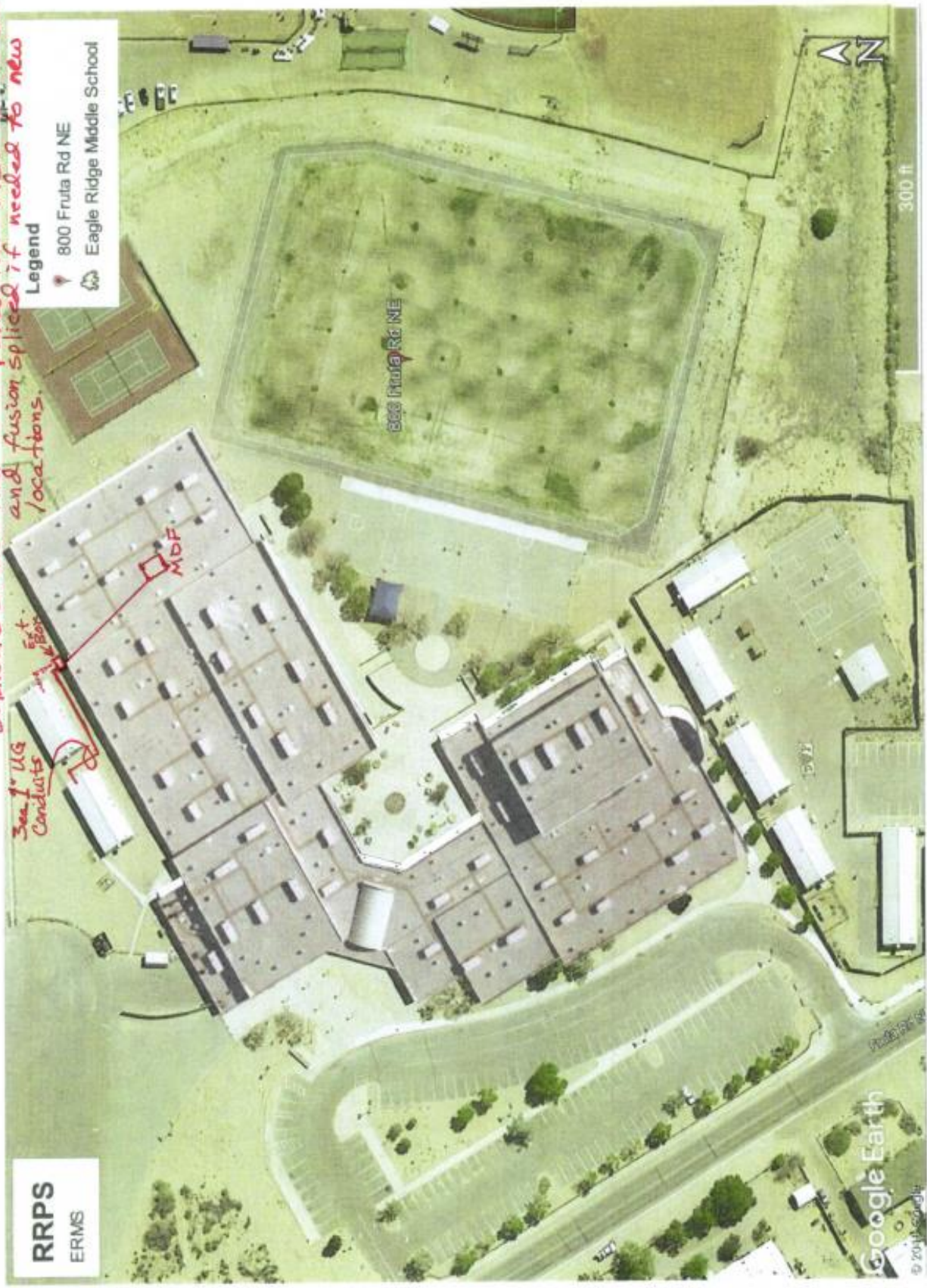
Legend

-  4601 Pepe Ortiz Rd SE
-  Rio Rancho Elementary School

RRPS
RRES

Google Earth
©2018 Earthstar

50 micron 6 strand fiber to be pulled from MDF to Ext. Box and fusion spliced if needed to new locations.

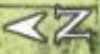


RRPS
ERMS

Legend
800 Fruta Rd NE
Eagle Ridge Middle School

Google Earth
© 2011 Google

300 ft



800 Fruta Rd NE

MDF

See 1/18 Conduits

Ext. Box