

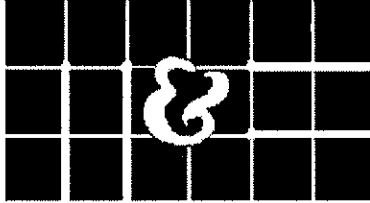
## ADDENDUM # ONE r1

Re: RRPS DISTRICT OFFICE MODIFICATIONS, PHASE ONE  
PROJECT #: 083000-15-001  
ITB #: 2016-004-FAC  
RIO RANCHO PUBLIC SCHOOLS

Date: Sept. 17, 2015  
From: Rio Rancho Public Schools and *John Barton, AIA, RRC*  
To: All Prospective Bidders

In accordance with the Bid Documents, Plans, & Specifications dated 07.02.15; please note the following addendum items:

1. No work is to be performed in Rooms #402 and #412. Omit all work in these rooms from bid.
2. See following seven pages of Addendum #One items from M&E engineering.



## MECHANICAL & ELECTRICAL ENGINEERING, INC.

1222 LUISA ST., SUITE B  
SANTA FE, NM 87505  
PH# 505-983-2389  
FAX# 505-989-8776

8417 WASHINGTON PL., NE  
ALBUQUERQUE, NM 87113  
PH# 505-856-1699  
FAX#505-856-6099

MEMO

DATE: SEPTEMBER 16, 2015

TO: JOHN BARTON  
COMPANY: JOHN BARTON ARCHITECTS  
EMAIL: j@jwbarton.com

Pages including this cover sheet: 7

**RIO RANCHO PUBLIC SCHOOLS**  
**RRPS DISTRICT OFFICE - PHASE I**  
**ADDENDUM #1**

The following items shall be incorporated into the Contract Documents.

### CLARIFICATIONS

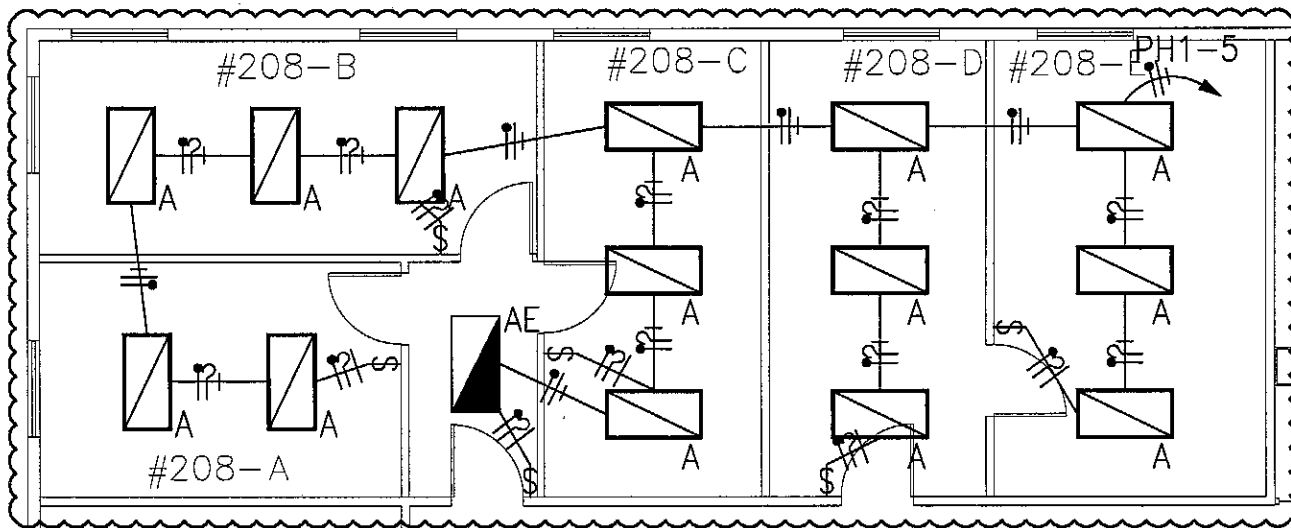
Sheet #	Item
E-4.1	PANEL "DP" IS TO BE A DISTRIBUTION PANEL. SWITCHBOARD/GEAR NOT REQUIRED.
E-4.1	FEEDERS TO PANEL "DP" ARE EXISTING. CONTRACTOR TO FIELD VERIFY FEEDER SIZE PRIOR TO ORDERING EQUIPMENT.
E-4.1	PANEL "DP" TO BE SURFACE MOUNTED IN EXISTING ELECTRICAL ROOM. ELECTRICAL ROOM DOES NOT REQUIRE "FINISHED AREA" PANEL SKIRTS FROM FLOOR TO CEILING.

### DRAWING REVISIONS

Sheet #	Item
SKE-01	ADDITION OF LIGHT FIXTURE TAGS TO SHEET E-2.1.
SKE-02	ADDITION OF LIGHT FIXTURE LABELS TO SHEET E-2.1.
SKE-03	ADDITION OF LIGHT FIXTURE LABELS TO SHEET E-2.1.
SKE-04	ADDITION OF LIGHT FIXTURE LABELS TO SHEET E-2.1.
SKE-05	ADDITION OF LIGHT FIXTURE SCHEDULE TO SHEET E-2.1
SKE-06	ADDITION OF GENERAL NOTE TO SHEET E-2.2.

All other provisions of the Contract Documents shall remain unchanged. This addendum is hereby made part of the Contract Documents to the same extent as though it were originally included therein. Each bidder shall acknowledge receipt of this addendum on the Bid Proposal Form in the space provided.

**End of Addendum**



#207

#206

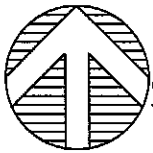
#209-A

#205

#210

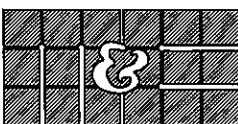
#209-B

#204



# ELECTRICAL LIGHTING PLAN

SCALE: 1/8" = 1'-0"



**MECHANICAL & ELECTRICAL  
ENGINEERING, INC.**  
PROJECT #15051

**SANTA FE:**  
1222 Luisa St. Suite B  
Santa Fe, New Mexico 87505  
505/983-2389

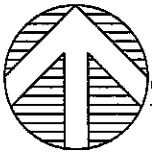
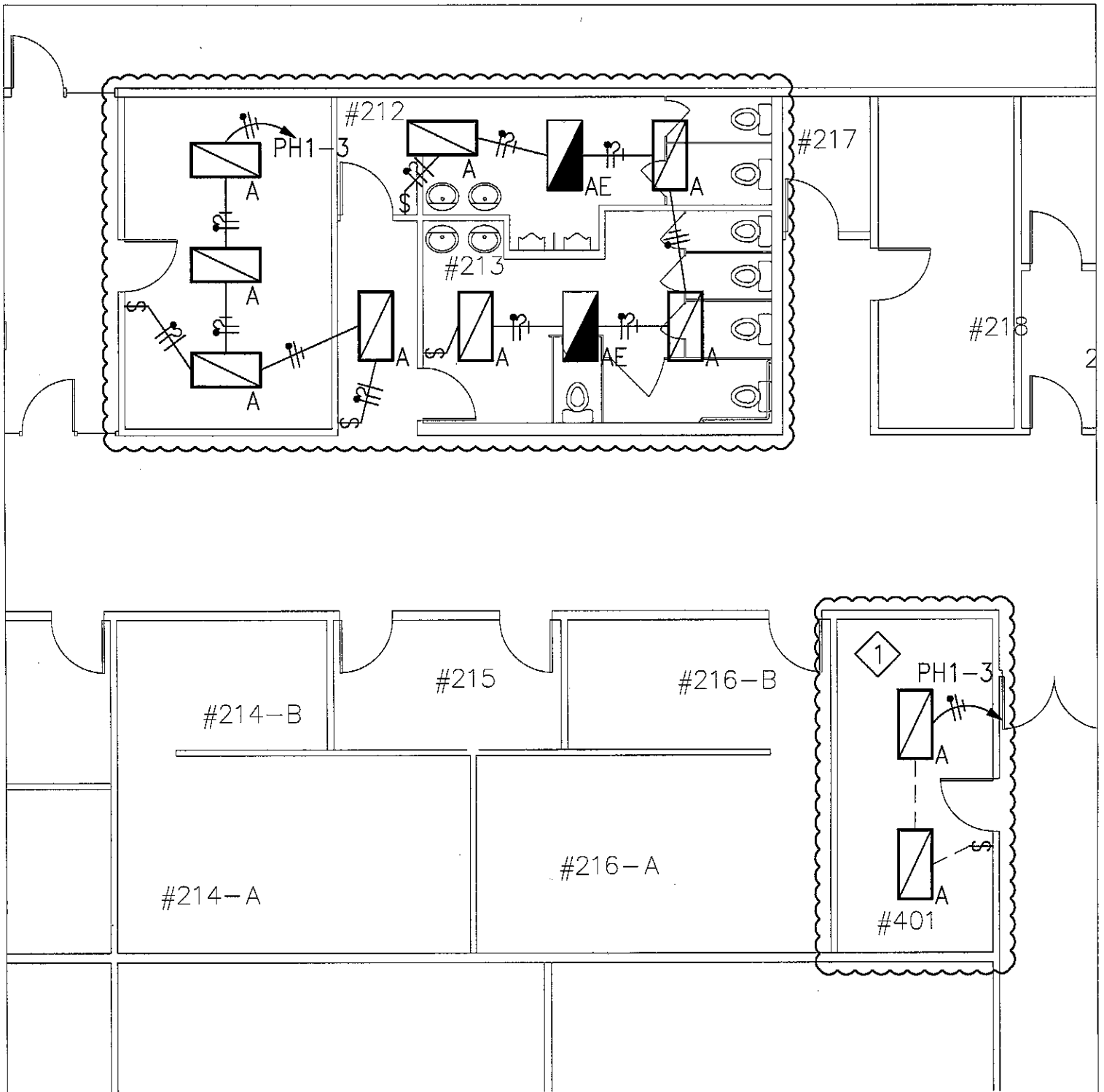
**ALBUQUERQUE:**  
8417 Washington Pl., NE  
Albuquerque, NM 87113  
505/856-1699

**RIO RANCHO PUBLIC SCHOOLS  
DISTRICT OFFICE'S  
REFERENCE SHEET E-2.1  
RIO RANCHO, NEW MEXICO**

P:      FP:      M:      E:

09/15/15

**SKE-01**



# ELECTRICAL LIGHTING PLAN

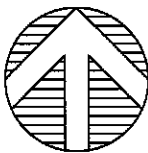
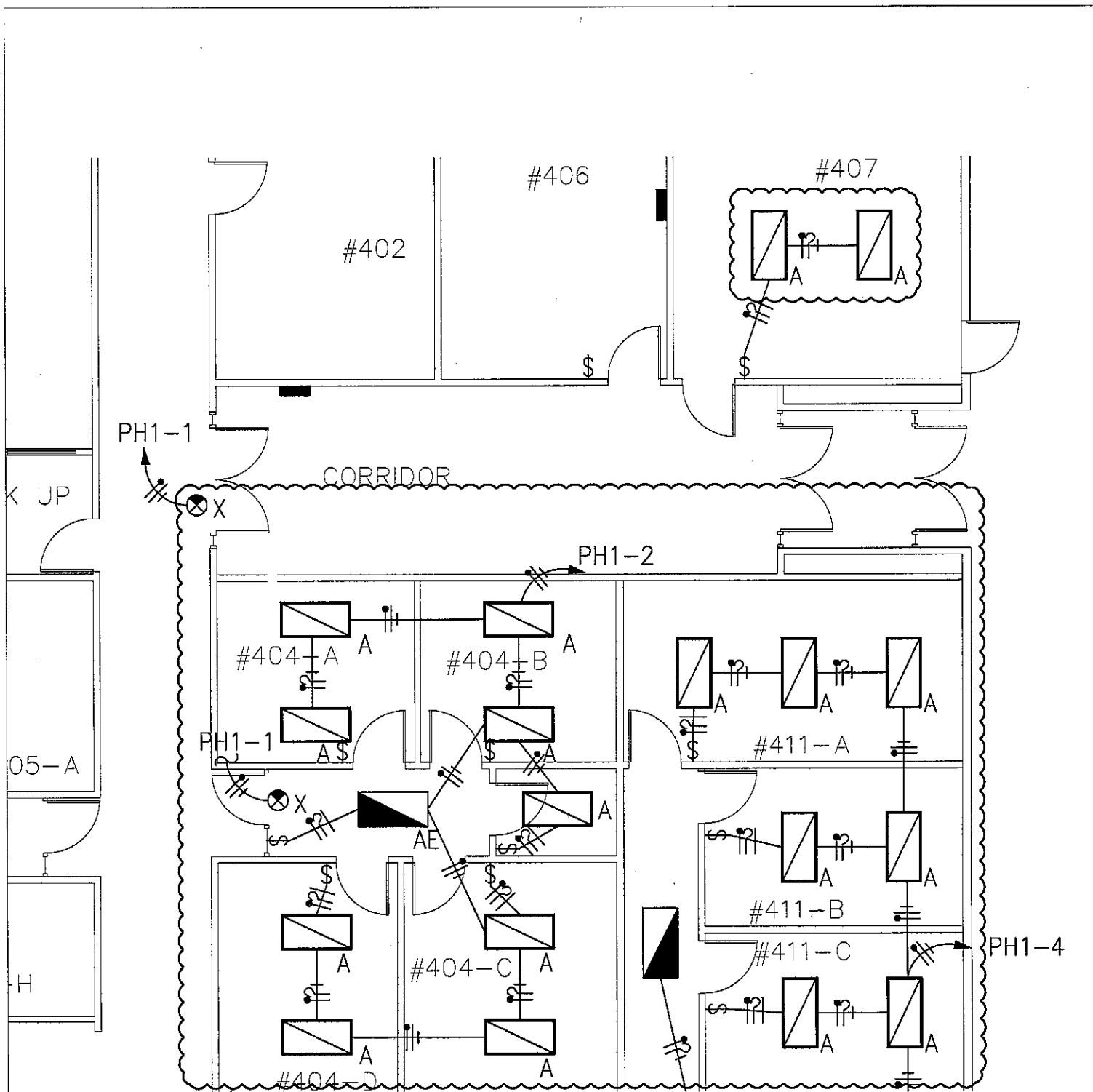
SCALE: 1/8" = 1'-0"

	<b>SANTA FE:</b> 1222 Luisa St. Suite B Santa Fe, New Mexico 87505 505/983-2389		
	<b>ALBUQUERQUE:</b> 8417 Washington PL, NE Albuquerque, NM 87113 505/856-1699		
<b>MECHANICAL &amp; ELECTRICAL ENGINEERING, INC.</b> PROJECT #15051			
P:	FP:	M:	E:

**RIO RANCHO PUBLIC SCHOOLS  
 DISTRICT OFFICE'S  
 REFERENCE SHEET E-2.1  
 RIO RANCHO, NEW MEXICO**

**09/15/15**

**SKE-02**



# ELECTRICAL LIGHTING PLAN

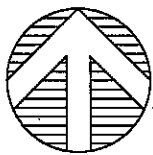
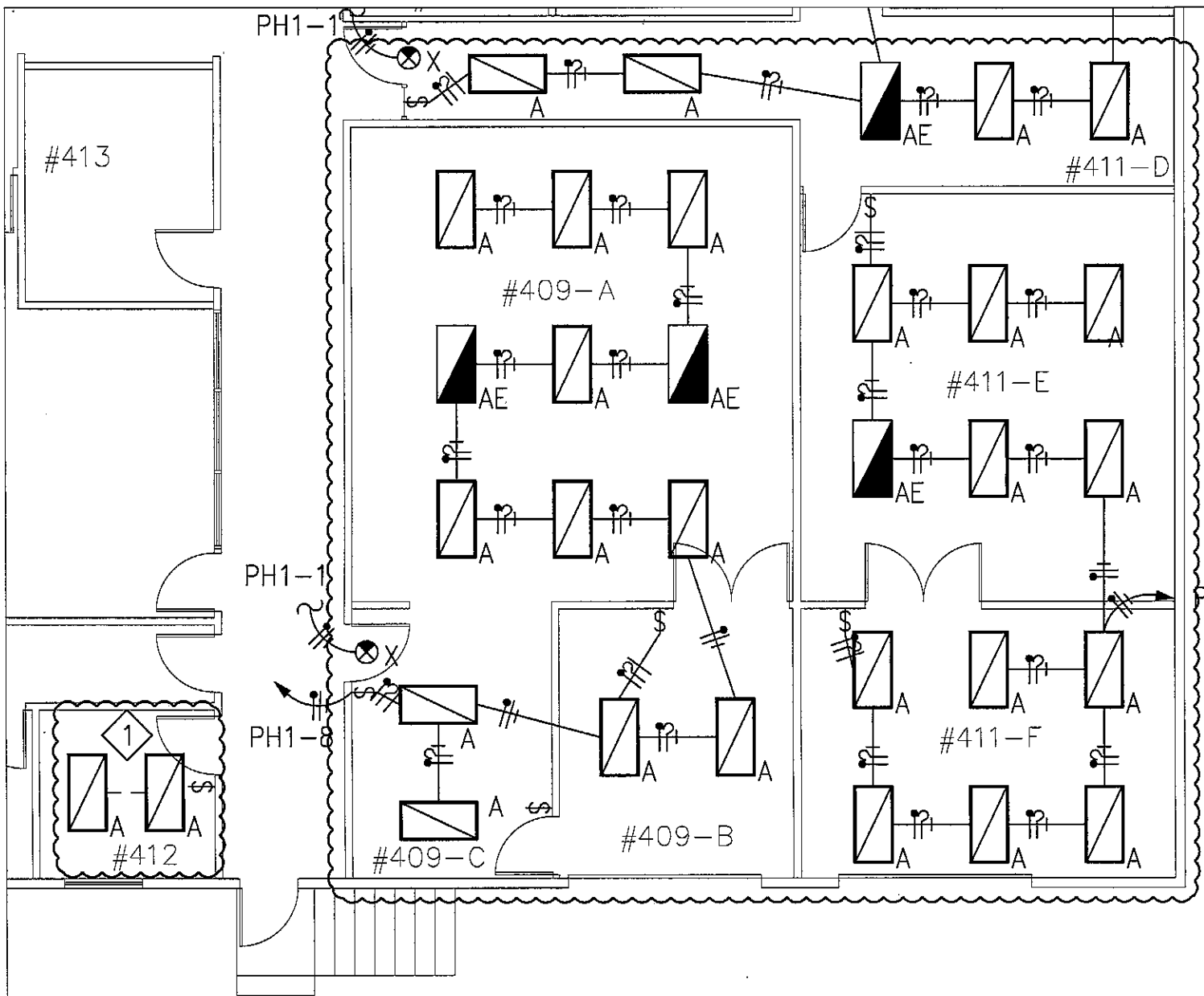
SCALE: 1/8" = 1'-0"

	<b>SANTA FE:</b> 1222 Luisa St. Suite B Santa Fe, New Mexico 87505 505/983-2389		
	<b>ALBUQUERQUE:</b> 8417 Washington PL, NE Albuquerque, NM 87113 505/856-1699		
<b>MECHANICAL &amp; ELECTRICAL ENGINEERING, INC.</b> PROJECT #15051			
P:	FP:	M:	E:

**RIO RANCHO PUBLIC SCHOOLS  
 DISTRICT OFFICE'S  
 REFERENCE SHEET E-2.1  
 RIO RANCHO, NEW MEXICO**

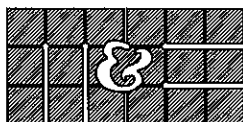
**09/15/15**

**SKE-03**



# ELECTRICAL LIGHTING PLAN

SCALE: 1/8" = 1'-0"



MECHANICAL & ELECTRICAL  
ENGINEERING, INC.  
PROJECT #15051

SANTA FE:  
1222 Luisa St. Suite B  
Santa Fe, New Mexico 87505  
505/983-2389

ALBUQUERQUE:  
8417 Washington Pl., NE  
Albuquerque, NM 87113  
505/856-1699

RIO RANCHO PUBLIC SCHOOLS  
DISTRICT OFFICE'S  
REFERENCE SHEET E-2.1  
RIO RANCHO, NEW MEXICO

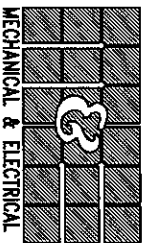
P:      FP:      M:      E:

09/15/15

SKE-04

## LIGHT FIXTURE SCHEDULE

KEY	DESCRIPTION	MANUFACTURER	CATALOG #	#LAMPS/TYPE	VOLT.	WATTS/ FIXTURE	COMMENTS
A	2' X 4' TROFFER LED MODULE	COOPER LIGHTING METALUX	24SR-LD1-48-C-UNV-L835-CD1-U	LED	UNV	49.1	
AE	2' X 4' TROFFER LED MODULE	COOPER LIGHTING METALUX	24SR-LD1-48-C-UNV-EL-L835-CD1-U	LED	UNV	49.1	EMERGENCY OPTION
X	AP SERIES EIT WITH SQUARE HEAD COMBO	COOPER LIGHTING SURE LITES	AP7-R-WH-DH	LED	120	3.4	



**SANTA FE:**  
1222 Lugo St., Suite B  
Santa Fe, New Mexico 87505  
505/983-2389

**ALBUQUERQUE:**  
8417 Washington Pl., NE  
Albuquerque, NM 87113  
505/855-1889

**MECHANICAL & ELECTRICAL  
ENGINEERING, INC.**  
PROJECT #15051

P: \_\_\_\_\_ FP: \_\_\_\_\_ M: \_\_\_\_\_ E: \_\_\_\_\_

**RIO RANCHO PUBLIC SCHOOLS  
DISTRICT OFFICE'S  
REFERENCE SHEET E-2.1  
RIO RANCHO, NEW MEXICO**

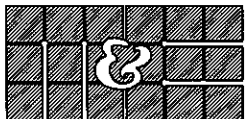
**09/15/15**

**SKE-05**

# GENERAL NOTES:

---

- A. COORDINATE ALL WORK WITH IT DEPARTMENT.
- B. CONTRACTOR TO VERIFY IT DEPARTMENT REQUIREMENTS FOR EQUIPMENT, CABLES AND ROUTING.
- C. THE EXISTING FIRE ALARM SYSTEM IS BY "NOTIFIER". CONTRACTOR TO COORDINATE WITH SOUND AND SIGNAL INC. FOR ALL PRICING.



MECHANICAL & ELECTRICAL  
ENGINEERING, INC.

PROJECT #15051

SANTA FE:  
1222 Luisa St. Suite B  
Santa Fe, New Mexico 87505  
505/983-2389

ALBUQUERQUE:  
8417 Washington Pl., NE  
Albuquerque, NM 87113  
505/856-1699

P:	FP:	M:	E:
----	-----	----	----

**RIO RANCHO PUBLIC SCHOOLS  
DISTRICT OFFICE'S  
REFERENCE SHEET E-2.2  
RIO RANCHO, NEW MEXICO**

**09/15/15**

**SKE-06**